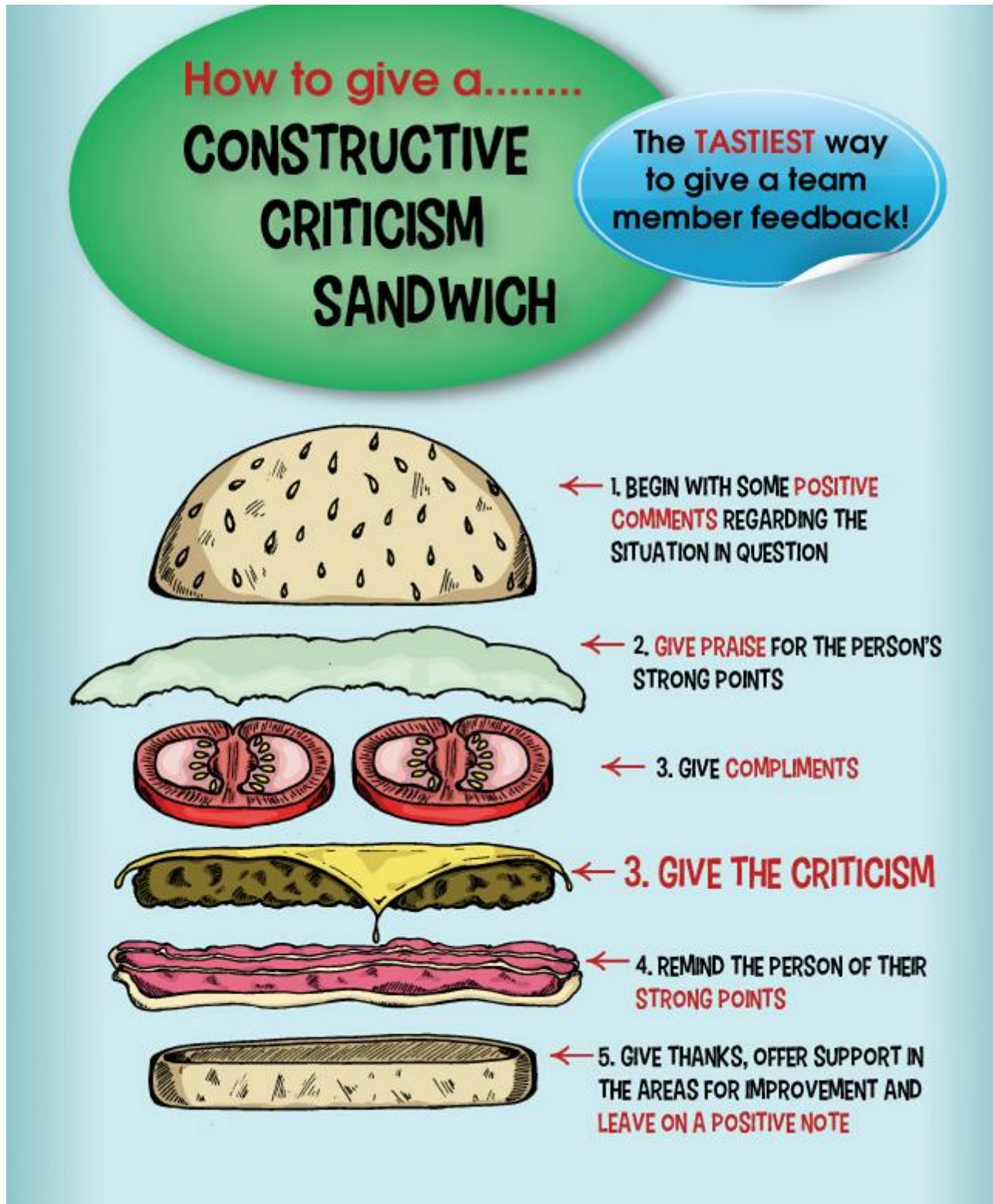


W03-2: "Sandwich-Feedback"

In this worksheet, we will examine the pros and cons of the very popular "Sandwich-Feedback-Strategy". It is a simple and structured method for giving feedback:



Musings of an Adult Nurse Educator, CC BY NC SA 4.0 International License,
<https://musingsofanadulnurseeducator.wordpress.com/2017/03/06/constructive-criticism-sandwich/>

Learning log assignments



Find up to three learning partners with whom you will work together.



Do an internet research on “sandwich feedback strategy” and collect pros and cons on this strategy. **(20 minutes)**



Save your results using [this worksheet](#). **(10 minutes)**

From:
<https://geotraining.de/> - Summer School: GeoTraining

Permanent link:
<https://geotraining.de/doku.php?id=en:courses:training:element-04:worksheets:lc-ws-03-2>

Last update: **2025/08/17 18:15**

